

ST. MARY MACKILLOP PRIMARY SCHOOL

152 Odessa Avenue, Keilor Downs, Vic 3038
www.mmkeilordowns.catholic.edu.au
T: 03 9367 6199



Staying Connected No. 7, 23 May, 2025

Warm Greetings Everyone!

Pope Leo XIV

On Sunday—Pope Leo XIV was officially welcomed as our new Pope!

Pope Leo has lived an inspiring life. He was born in the United States, served as a priest and bishop, led the Augustinian Order, worked with some of the poorest communities in Peru, and more recently, supported the Church through his work in the Vatican. These experiences have given him a deep understanding of people and places around the world—and will help him lead the Church with wisdom, kindness, and compassion.

Many people believe Pope Leo is the right leader for the Church today. He speaks with hope, encourages peace, and brings joy—three things our world truly needs.

This is an exciting new chapter for the Church. Let's keep Pope Leo in our prayers and ask God to bless him as he begins this important journey.

And just like Pope Leo, let's try to bring peace, hope, and joy into the lives of the people around us; here in our school and in our wider community.



Leo P.P. XIV

Have a good week everybody.



Anthony McCluskey
Principal

St. Mary MacKillop Primary School is committed to child safety. We believe all students deserve, as a fundamental right, safety and protection from all forms of abuse and neglect.

COLD FLU AND VIRUSES—A SHARED RESPONSIBILITY

We kindly remind all families of the importance of keeping children at home if they are unwell with colds, flu, or other viral illnesses. While we understand how challenging this can be—especially for working parents—minimising the spread of illness is a shared responsibility.

Viruses spread quickly in school environments, and it is not fair on other children or staff to be exposed unnecessarily. On Wednesday of this week alone, we had 12 staff members absent due to illness and over 60 students away—representing more than 12% of our student population.

Please support our efforts to maintain a healthy school environment by keeping unwell children at home until they are fully recovered. We deeply appreciate your continued cooperation and care for the wellbeing of our entire school community.

Thank you.
Anthony McCluskey

PRINCIPAL'S AWARDS 2025



FINDING HOPE





FINDING HOPE



Hi everyone,

Last week I spoke to you about some special prayer stones that have been put out around our school that symbolise hope. You might be wondering what hope is?

In the Catholic faith, hope is knowing that God is always with us, blessing us. Hope is also knowing that God is always with us, in the people that we meet. That is why in this year of Jubilee, we are reminded that we are pilgrims of hope- we are called to be hope for each other. These colorful stones help us to think about hope.

Some of these prayer stones have words that remind us about hope, like: peace, joy, happy, love and Jesus. Some of them have symbols that represent hope, like a cross, love heart or a smiley face.

This week there will be more stones coming out, so don't worry if you haven't found any. But if you already have a prayer stone, maybe leave any other stones that you find, so that someone else can find hope in our school.

Sierra Borg
Student Jubilee Ambassador



Year 4's Toolangi State Forest Excursion

On Tuesday 13th May, our Grade 4's were lucky enough to adventure to the Toolangi Forest.

We had an opportunity to learn about what makes a healthy forest habitat, discover the different ways that people use and care for our forests and how we can ensure the sustainability of forests for the future. We got to learn about where our drinking water comes from and even try some. We got to view a range of different animals that call Toolangi State Forest home.



Mother's Day Breakfast



SMMPS BIG FREEZE DAY

Monday 30th June

MND

Support the cause!

**Buy Big Freeze
merchandise**

(Bunnings, Coles
and online)

OR **bring a
donation** on

Big Freeze Day

Wear your
winter
woolies or Big
Freeze merch

on
**Big Freeze
Day**



AN SRC INITIATIVE



FACT SHEET FOR PARENTS, GUARDIANS AND CARERS

WHAT IS THE NCCD?

The Nationally Consistent Collection of Data on School Students with Disability (NCCD) takes place every year.

The NCCD is a collection that counts:

- the number of school students receiving an adjustment or 'help' due to disability
- the level of adjustment they are receiving to access education on the same basis as other students.

Students are counted in the NCCD if they receive ongoing adjustments at school due to disability. This 'help' allows them to access education on the same basis as a child without disability. The NCCD uses the definition of disability in the [Disability Discrimination Act 1992](#).

Schools provide this information to education authorities.

Go to [What is a reasonable adjustment?](#) below to learn about adjustments.

WHY IS THIS DATA BEING COLLECTED?

All schools in Australia must collect information about students with disability.

The NCCD:

- ensures that the information collected is transparent, consistent and reliable
- provides better information that improves understanding of students with disability
- allows parents, guardians, carers, teachers, principals, education authorities and government to better support students with disability.

Student with disability loading

Funding from the Australian Government for students with disability is based on the NCCD through the student with disability loading.

Students with disability who are counted in the top three levels of the NCCD (extensive, substantial and supplementary) attract the loading. Funding is based on a per-student amount at each of the three levels of additional support. The amount of the loading reflects the level of support students with disability need to participate fully in school, with higher funding for those who need higher levels of support.

Australian Government recurrent school funding is provided as a lump sum to school authorities including state and territory governments, which can then distribute the funding to their member schools according to their own needs-based arrangements.

The Government expects schools and school systems to consider their funding from all sources (ie Australian Government, state and territory and private) and prioritise their spending to meet the educational needs of all of their students, including students with disability.

WHAT ARE THE BENEFITS OF THE NCCD FOR STUDENTS?

The information collected by the NCCD helps teachers, principals, education authorities and governments to better support students with disability at school.

The NCCD encourages schools to review their learning and support systems and processes. This helps schools to continually improve education outcomes for all students.

WHAT MUST SCHOOLS DO FOR STUDENTS WITH DISABILITY?

All students have the right to a quality learning experience at school.

Students with disability must be able to take part in education without discrimination and on the same basis as other students. To ensure this, schools must make reasonable adjustments if needed for students with disability. Educators, students, parents, guardians, carers and others (eg health professionals) must work together to ensure that students with disability can take part in education.

The [Disability Discrimination Act 1992](#) and the [Disability Standards for Education 2005](#) describe schools' responsibilities.

WHAT IS A REASONABLE ADJUSTMENT?

An adjustment is an action to help a student with disability take part in education on the same basis as other students.

Adjustments can be made across the whole school (eg ramps into school buildings). They can be in the classroom (eg adapting teaching methods). They can also be for individual student need (eg providing personal care support).

The school assesses the needs of each student with disability. The school provides adjustments in consultation with the student and/or their parents, guardians and carers.

Schools must make reasonable adjustments if needed. The Disability Standards for Education 2005 define 'reasonable adjustment' as an adjustment that balances the interests of all parties affected.

WHO IS INCLUDED IN THE NCCD?

The definition of disability for the NCCD is based on the broad definition under the [Disability Discrimination Act 1992](#).

The following students are examples of those who may be included in the NCCD if they need monitoring and adjustments:

- students with learning difficulties (such as dyslexia)
- students with chronic health conditions (such as epilepsy or diabetes).

WHO COLLECTS INFORMATION FOR THE NCCD?

Schools identify which students will be counted in the NCCD. They base their decisions on the following:

- adjustments provided for the student (after consultation with the student and/or their parents, guardians and carers)
- the school team's observations and professional judgements
- any medical or other professional diagnoses
- other relevant information.

School principals must ensure that information for the NCCD is accurate.

WHAT INFORMATION IS COLLECTED?

A student is counted in the NCCD if they receive reasonable adjustments at school due to disability.

Each year, schools collect the following information about the student, including:

- their year of schooling
- the level of adjustment received
- the broad type of disability.

For students who have more than one disability, the school uses professional judgement to choose one category of disability. They choose the category that most affects the student's access to education and for which adjustments are being provided.

A high level summary of the NCCD data is available to all Australian state and territory governments to improve policies and programs for students with disability.

HOW IS THIS DATA USED?

The NCCD data informs funding and work by schools and sectors. It ensures that support for students with disability becomes routine in the day-to-day practice of schools. The NCCD also supports students in the following ways.

- The NCCD helps schools better understand their legislative obligations and the Disability Standards for Education 2005.
- Schools focus on the individual adjustments that support students with disability. This encourages them to reflect on students' needs and to better support students.
- The NCCD facilitates a collaborative and coordinated approach to supporting students with disability. It also encourages improvements in school documentation.
- The NCCD improves communication about students' needs between schools, parents, guardians, carers and the community.

The Australian Curriculum, Assessment and Reporting Authority (ACARA) annually publishes high-level, non-identifying NCCD data.

WHEN DOES THE NCCD TAKE PLACE?

The NCCD takes place in August each year.

IS THE NCCD COMPULSORY?

Yes. All schools must collect and submit information each year for the NCCD. This is detailed in the *Australian Education Regulation 2013*. For more information, ask your school principal or the relevant education authority.

HOW IS STUDENTS' PRIVACY PROTECTED?

Protecting the privacy and confidentiality of all students is an essential part of the NCCD.

Data is collected within each school. Personal details, such as student names or student identifiers, are not provided to federal education authorities. Learn more about privacy in the [Public information notice](#).

FURTHER INFORMATION

Contact your school if you have questions about the NCCD. You can also visit the [NCCD Portal](#).

There is also a free [e-learning resource](#) about the *Disability Discrimination Act 1992* and Disability Standards for Education 2005.

This document must be attributed as *Fact sheet for parents, guardians and carers*.

PLAYGROUND USE BEFORE SCHOOL – REMINDER

Please note that all of the Junior and Senior Adventure Playgrounds are **not to be used before school**.



This is the Junior Adventure playground.

It is only for use by students from Prep to Year 2.




The climbing frames can be used by all students.

This is the Senior Adventure Playground.
It is only for students in Years 3 – 6.



Parents are required to actively watch their children when using the equipment after school.

REMINDERS

- The basketball court is used as a carpark in the morning and afternoon. The safety of our children is of utmost importance and therefore I ask that you take extra care when driving in the carpark areas. The speed limit is **5km per hour** and there is to be no double parking at all. Please only park in the designated parking spots and do not park on the **artificial turf or in pedestrian walk ways**. Thank you for taking the safety of our children seriously.
- 
- From time to time our children forget to bring their lunch to school or a lunch order is ordered for the wrong day and we ask parents to bring in the missing lunch. In order to continue with our healthy eating expectations we ask that parents **do not bring in take away food** such as McDonalds, KFC etc. If you do need to purchase lunch for your child we ask that you purchase things such as sushi, sandwiches or wraps.
 - The School opens at 8.30am and children can enter the classroom at 8.50am. **Please do not drop children off prior to 8.30am.** If you need to bring your child to school before 8.30am please book them into the before school hours program.
 - St Mary MacKillop is a 'Smoke Free Zone' and smoking on the school grounds is not permitted. According to the law, 'The Tobacco Act 1987 bans smoking or vaping on school premises or within 4 metres of any pedestrian access point to school premises.'
Please do not smoke or vape on the school grounds.

- If your child needs to bring a mobile phone to school it must be handed into the teacher in the morning where it will be stored in a secured location and returned to them in the afternoon. Please refer to the Mobile phone policy on the school website.
- As there is no supervision on the playground area and the oval are in the morning, these areas are out of bounds and children are not to play on the playground or the oval before school.
- The front drive through area between the Church and the School operates as a drive through zone only before school.
- Due to a few near misses, those who wish to park and bring their child into class must **use the back car park area.** There is now no parental parking in bays outside the front of the Church.

2025 Term Dates

Term 1: 31 January-04 April 2025
(Good Friday 18 April-Easter Monday 21 April)
Term 2: 22 April-04 July 2025
Term 3: 21 July-19 September 2025
Term 4: 6 October-16 December 2025
(Year 6 finish Friday 12 December)



Melbourne Archdiocese
Catholic Schools

AUSTRALIA'S BEST TEACHER



At the heart of all MACS schools are the teachers who enable vibrant centres of learning and growth – forming the head, heart, hands and soul of our young people.

This is why MACS is partnering once again with the Herald Sun on its Australia's Best Teachers campaign, a campaign to recognise and celebrate exceptional educators across school communities and the profound impact they have in inspiring growing minds to discover futures filled with purpose.



ST. MARY MACKILLOP
Primary School Keilor Downs

Nominate a
St Mary MacKillop
Primary School
staff member who inspires!

We know that our staff are
dedicated, caring,
inspirational and hard
working. Show your
appreciation by nominating
someone.

Nominate

<https://www.australiasbestteacher.com.au/>



Melbourne Archdiocese
Catholic Schools

AUSTRALIA'S BEST TEACHER



ST. MARY MACKILLOP
Primary School Keilor Downs



Nominate

<https://www.australiasbestteacher.com.au/>

**She Who Belongs
She Who Thrives**



Now accepting enrolments Year 7 2027
Applications close 15 August 2025



Book a College Tour today:
14-22 Vida St, Aberfeldie, VIC, 3040
(03) 9331 9300
registrar@avemaria.vic.edu.au



Parent Information Night

Caroline Chisholm Catholic College invites you to join our upcoming **Parent Information Night**. This evening is designed for families interested in joining our school community and wanting to learn more about us.

Hear from our Principal, Dr Napoleon Rodezno, as he unpacks who we are, what we offer and what our plans for the future are. Information about enrolments for Year 7, 2027 will also be available.

Monday, 23rd June 2025 | 6.30pm – 7.30pm
(gates open at 6.15pm)

St Madeleine Centre
65 Churchill Avenue, Braybrook
(Christ the King Girls' Campus)

Please RSVP by Wednesday, 18th June 2025

Visit cccc.vic.edu.au or
scan the QR code to let
us know you can join.



For any questions regarding the event, please contact
registrar@cccc.vic.edu.au or call us on **9296 5311**.
We look forward to seeing you on the night!



Camps, Sports and Excursions Fund APPLICATION Form

School Name

School REF ID

Parent/legal guardian details

Surname

First name

Address

Town/suburb State Postcode

Contact number

Centrelink pensioner concession **OR** Health care card number (CRN)

- - - **OR**

☐ Foster parent* **OR** ☐ Veterans affairs pensioner (Gold Card)**

*Foster Parents must provide a copy of the temporary care order letter from the Victorian Department of Families, Fairness and Housing (DFFH).

**Applicants must provide a copy of the Veteran Affairs Gold card.

Student details

Child's surname	Child's first name	Student ID	Date of birth (dd/mm/yyyy)	Year level

I authorise the Victorian Department of Education (DE) to use Centrelink Confirmation eServices to perform an enquiry about my Centrelink customer details and concession card status to enable the business to determine if I qualify for a concession, rebate or service. I also authorise the Victorian Department of Families, Fairness and Housing (DFFH) to provide the results of any enquiry to DE regarding temporary care orders.

I understand that:

- DFFH or Centrelink will use information I have provided to DE to confirm my eligibility for the Camps, Sports and Excursions Fund and will disclose to DE personal information including my name, address, payment and concession card type and status.
- This consent, once signed, remains valid while my child is enrolled at a registered Victorian school unless I withdraw it by contacting the school.
- I can obtain proof of my circumstances/details from DFFH and provide it to my child's school so that my eligibility for the Camps, Sports and Excursions Fund can be determined.
- If I withdraw my consent or do not alternatively provide proof of my circumstances/details, I may not be eligible for the Camps, Sports and Excursions Fund provided by DE.
- Information regarding my eligibility for the Camps, Sports and Excursions Fund may be disclosed to DFFH and/or State Schools Relief for the purpose of evaluating concession card services or confirming eligibility for assistance.

You can request access to the personal information that we hold about you, and to request that any errors be corrected, by contacting your child's school.

Signature of applicant Date / /

Camps, Sports and Excursions fund eligibility

Below are the criteria used to determine a student's eligibility for the Camps, Sports and Excursions Fund (CSEF).

Criteria 1 – Eligibility

To be eligible* for the fund, a mature minor of sixteen years of age or over, a parent or legal guardian of a student attending a registered Government or non-government Victorian primary or secondary school must:

- on the first day of Term one; or
- on the first day of Term two.
- a) Be an eligible beneficiary within the meaning of the State Concessions Act 2004, that is, be a holder of Veterans Affairs Gold Card or be an eligible Centrelink Health Care Card (HCC) or Pensioner Concession Card (PCC) holder; or
- b) Be a temporary foster parent; and
- c) Submit an application to the school by the due date.

* A special consideration eligibility category also exists. For more information, see: [Camps, Sports and Excursions Fund \(CSEF\): Eligibility | education.vic.gov.au](#)

Mature minors or parents who receive a Carer Allowance on behalf of a child, or any other benefit or allowance not income tested by Centrelink, are not eligible for the CSEF unless they also comply with one of (a) or (b) above.

Criteria 2 - Be of school age and attend school in Victoria

School is compulsory for all Victorian children aged between six and seventeen years of age inclusive.

For the purposes of CSEF, students may be eligible for assistance if they attend a Victorian registered primary or secondary school. Typically, these students are aged between five and eighteen years inclusive.

CSEF is not payable to students' attending pre-school, kindergarten, home schooling, or TAFE.

Eligibility Date

For concession card holders, CSEF eligibility will be subject to the parent/legal guardian's concession card being successfully validated with Centrelink (see [Camps, Sports and Excursions Fund \(CSEF\): Policy | education.vic.gov.au](#)).

Payment amounts

CSEF payment amount

The CSEF is an annual payment to the school to be used towards camps, sports and/or excursion expenses for the benefit of the eligible student.

The CSEF is paid directly the school and will be allocated by the school towards camps, sports and/or excursion costs for your child. Please refer to the policy for the current rates.

For ungraded students, the rate payable is determined by the student's date of birth. For more information, see: [Camps, Sports and Excursions Fund \(CSEF\): Payment amounts | education.vic.gov.au](#)

Foundation and Year 7 government school students who are CSEF recipients are also eligible for a uniform voucher. Schools are required to make applications on behalf of parents, so please register your interest at the school.

How to complete the application form

NOTE: ALL SECTIONS MUST BE COMPLETED BY PARENT/LEGAL GUARDIAN

- Complete the PARENT/LEGAL GUARDIAN DETAILS section.
Make sure that the Surname, First Name, and Customer Reference Number (CRN) details match those on your concession card. You will also need to provide your concession card to the school.
If you are claiming as a Foster Parent or a Veteran Affairs Pensioner, you will need to provide a copy of documentation confirming your status as a temporary Foster Parent or provide your Veterans Affairs Pensioner Gold card to the school.
- Complete the STUDENT/S DETAILS section for students at this school.
- Sign and date the form and return it to the school office as soon as possible.

CSEF payments cannot be claimed retrospectively for prior years.

Queries relating to CSEF eligibility and payments should be directed to the school.

Youth Road Safety

Fact Sheet



Whether you're biking or riding an e-scooter, follow these simple road safety tips to stay safe and have fun on the move!

MODIFIED OR PETROL POWERED BICYCLES

- Illegal.



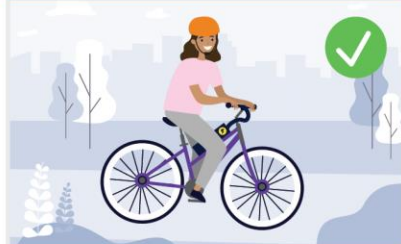
MOTORBIKES

- To ride on or off-road it must be registered with a full or recreation registration
- Helmet must be worn at all times.



E-BIKES

- 25 km/h MAX speed
- Motor cannot provide power at speeds higher than 25km/h
- Helmet must be worn at all times
- No passengers
- Cannot be ridden on footpaths.



E-SCOOTER

- Be aged 16 yrs or over
- Max speed 20 kmph
- Helmet must be worn at all times
- No passengers
- Cannot be ridden on footpaths.



For more information, visit police.vic.gov.au/road-safety

Upcoming Events 2025

Term 2: 22 April-04 July 2025

Saturday 31 May

Year 3 First Holy Communion

10.30am and 12.30pm

Friday 06 June

2026 Enrolment Offers Due

Friday 20 June, Monday 23 June and Monday 30 June

Teeth on Wheels

Saturday 21 June

Year 6 Confirmation

10am and 12pm

Monday 23 June to Friday 27 June

Prep 2026 Existing Family Interviews

Friday 04 July

Last Day of Term 2

Students finish @ 1pm